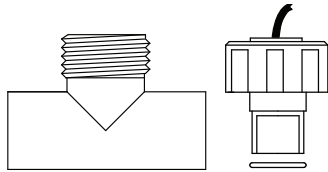


Conductivity Probes

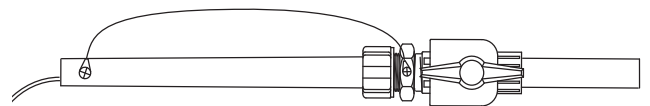
E-2 and E-4A quick release style

PVC construction with carbon sensor tips designed for our quick release tee (T-3); 150 psi (10.4 bar), 140°F (60°C) max: E-2, E-4A, E-2SS, E-4ASS (SS = stainless steel sensor tips).



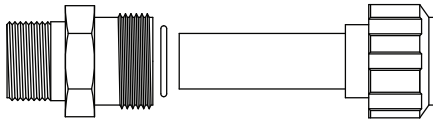
CS-4A corporation stop style

PVC construction with carbon sensor tips, 18" long supplied with a compression fitting and 1" FNPT ball valve; 75 psi (5.1 bar), 140°F (60°C) max.



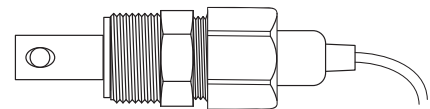
DI insertion style

PVC construction with carbon sensor tips includes a quick release collar with 1" MNPT connection; 150 psi (10.4 bar), 140°F (60°C) max: DI-2, and DI-4A.



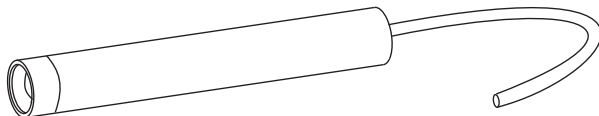
AL-4RTD pure water probe

Stainless steel construction supplied with a 3/4" MNPT poly compression fitting, 100 psi (6.9 bar), 212°F (100°C) max, RTD style temp. comp.



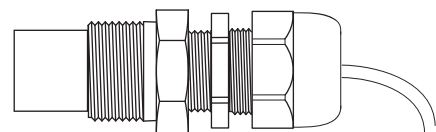
DC dip style

DC probes are 18" long, CPVC construction, 212°F (100°C) max: DC-2, DC-4A, DC-2SS, DC-4ASS (SS = stainless steel sensor tips).



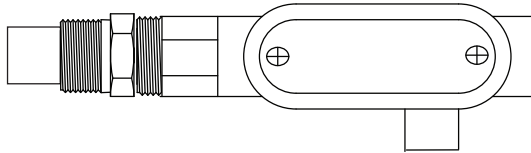
AH-4A insertion style

Stainless steel 1" MNPT bushing and CPVC construction; 250 psi (17.3 bar), 212°F (100°C) max: AH-2SS, AH-4ASS, AH-4BSS.



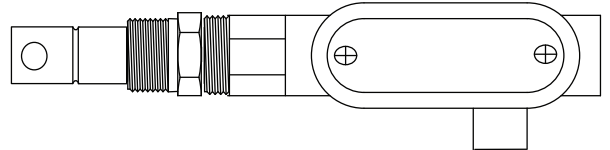
BE-2 boiler probes

Stainless steel 1" MNPT bushing and PEEK construction, 75 psi (5.17 bar) max: BE-2 no temp comp.



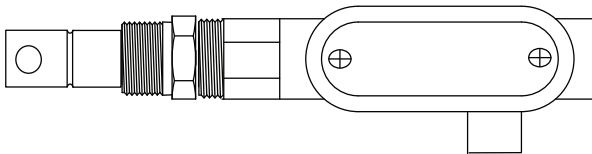
BE-32 and BE-4RTD boiler probes

Stainless steel and PEEK construction, 3/4" MNPT supplied with 1" bushing; 250 psi (17.2 bar), 400°F (204°C) max. BE-32 no temp comp, BE-4RTD uses RTD temp comp.



BE-H2-S and BE-H4RTD-S boiler probes

Stainless steel and PEEK construction, 3/4" MNPT; 600 psi (41.3 bar) max.



Notes:

1. Thermistor style temperature compensation: A = 32-140°F (0-60°C), B = 32-212°F (0-100°C).
2. RTD temperature compensation is only available on MegaTron and MegaTron XS controllers.
3. Number of wires per probe: -1 or -2 = 2 wires; -4 = 4 wires.
4. RTD probes require six conductors ran from controller to probe.

Get the Advantage

01/2017



4700 Harold Abitz Dr
Muskogee, OK 74403
800-743-7431 phone
888-686-6212 fax
www.advantagecontrols.com